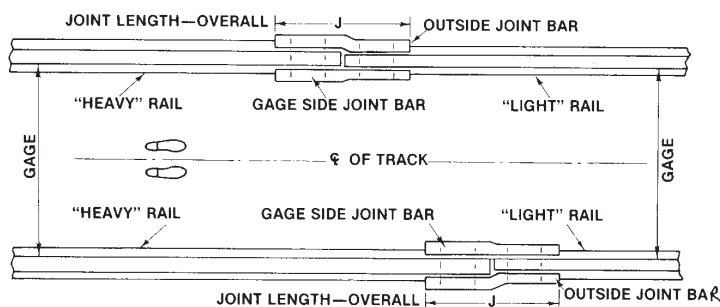


Compromise Joint Bars

Designed to join rail sections of different sizes while keeping gage and running surfaces in alignment. Compromise joints consist of two bars - an "outside joint bar" and a "gage side joint bar". Generally speaking, unless the difference between the rail head width is less than $\frac{3}{16}$ ", right and left-hand joints are required. Unless otherwise specified:

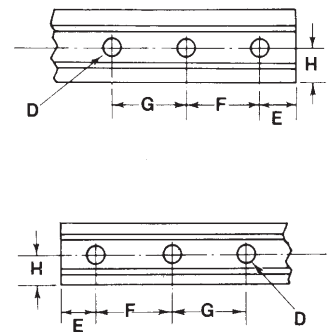
- 1) bolt holes are alternately round and oval,
- 2) bolts are not provided, and
- 3) rail joint opening is $\frac{1}{8}$ ".

To Determine Right-Hand or Left-Hand Joint



Stand between "HEAVY" rails, facing direction of the "LIGHT" rails. Indicate the joint to the right as "RIGHT HAND" joint, and the joint to the left as the "LEFT HAND" joint.

To Determine Bolt Hole Locations



Switch Point Protectors

The reversible manganese steel switch point protector increases the life of your switch point. When bolted to the inside of the straight main rail, the protector momentarily deflects the wheel flange so it misses the tip of the switch point. It is furnished complete with steel face plate, shim, track bolts, nuts and spring washers.

To order, specify rail size and section.

