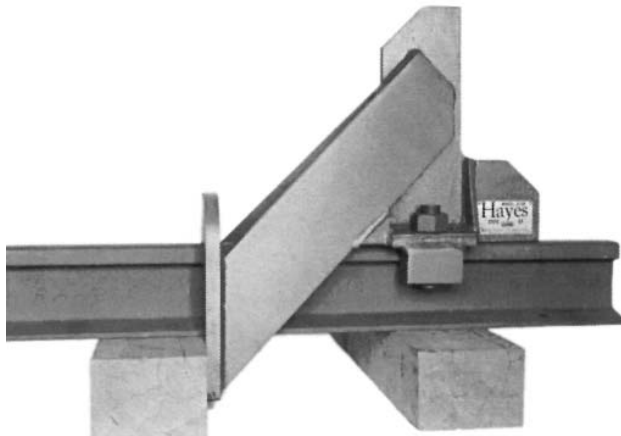


Wheel Stops

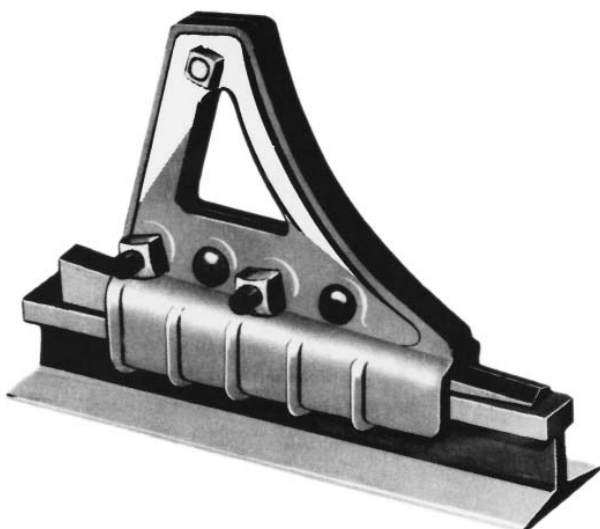
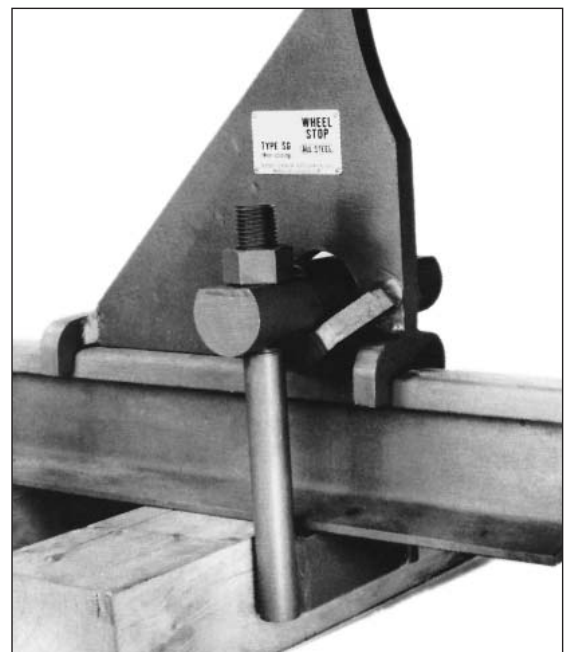


Model SF Cushioned Type

Model SF is a heavy-duty wheel stop which utilizes the cushioning ability of the cross ties and ballast to absorb impact. It also employs the car's weight for additional braking friction on the rail. It is made of all welded steel construction, and requires tightening only four bolts for installation of each pair. Fits all rail sizes 60 to 140-lb. Weight - 350 lbs./pr.

Model SG

The SG wheel stop is an economically priced, but effective wheel stop. The impact of a car locks this wheel stop tightly to the rail. It is made of all welded steel construction, and requires tightening only four bolts for installation of each pair. Fits all rail sizes 60 - 140-lb. Weight - 200 lbs./pr.



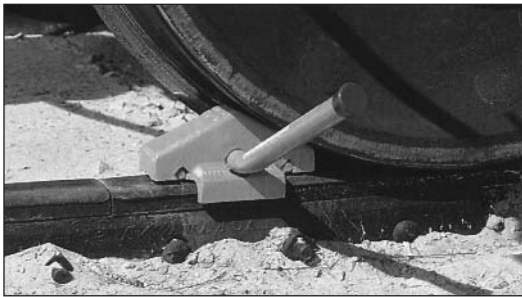
Model CS-2 Self-Tightening Type

Durable self-tightening wheel stops use tapered wedges between the assembled castings and rail head, thus insuring perfect alignment to rail size and providing self-tightening action. This stop is assembled on head of rail by tightening five bolts, driving wedge from the rear between the assembles castings and rail head until tight. Spacer washers are provided to allow for varying rail head widths. Fits all rail sizes 60 to 140-lb. Weight - 220 lbs./pr.

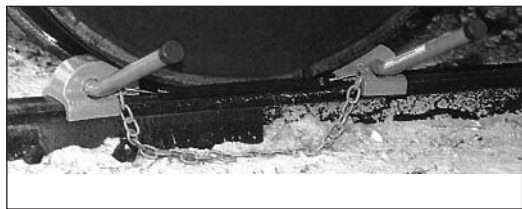


Track Accessories

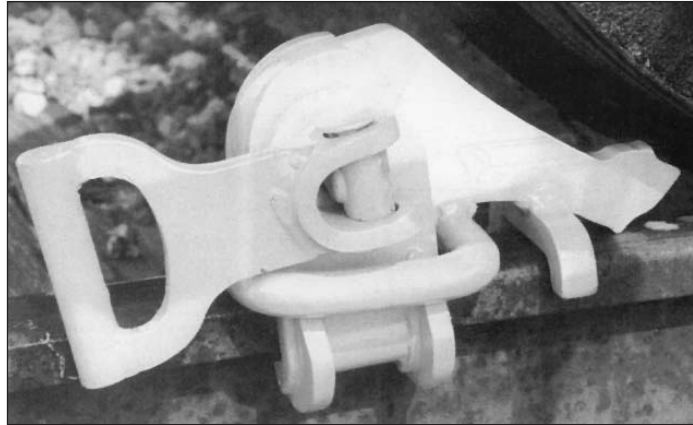
Wheel Chocks



Single Chock



Double Chock



Heavy Duty Wheel Chock

Blue Flags

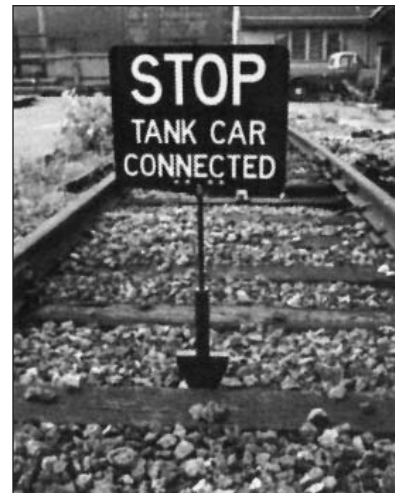
All of our Blue Flag Signs meet the requirements of the FRA and OSHA for the protection of workers around or in freight cars and locomotives.



Permanent Blue Flag
Model BFH Fold Down
Flush Ground Level



Portable Blue Flag
Model RBF & RBFL



Portable Blue Flag
Model BF

